

# Attention Commercial Fishermen

OSU Science Instruments  
on Seafloor in Fishing Areas.  
There are no visible buoys. Please Avoid!

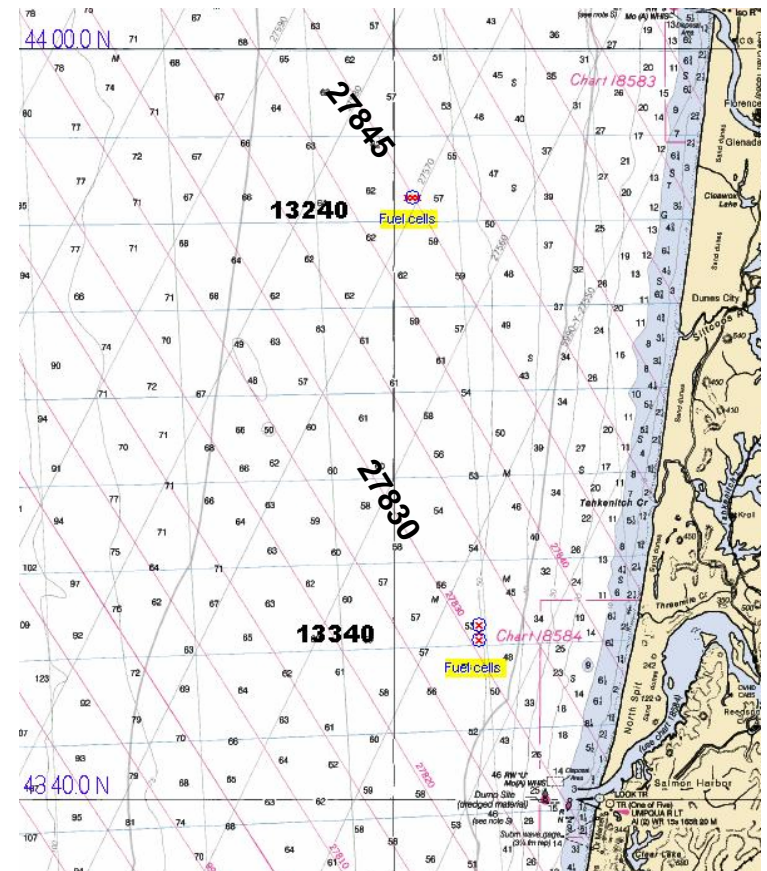


Fuel cell device

- Six experimental ocean power sources (fuel cells) linked to instrumentation are in two clusters at the following locations:

GPS		LORAN C		Depth
Latitude	Longitude	9940 Chain	Approx.	
43°44.20' N	124°16.80' W	13339.0	27830.7	47.5 fms
43°44.40' N	124°16.80' W	13337.0	27831.0	47.5 fms
43°44.60' N	124°16.80' W	13335.0	27831.5	47.5 fms
43°56.00' N	124°19.50' W	13234.5	27844.5	55.0 fms
43°56.00' N	124°19.25' W	13234.5	27845.0	55.0 fms
43°56.00' N	124°19.05' W	13234.5	27845.0	55.0 fms

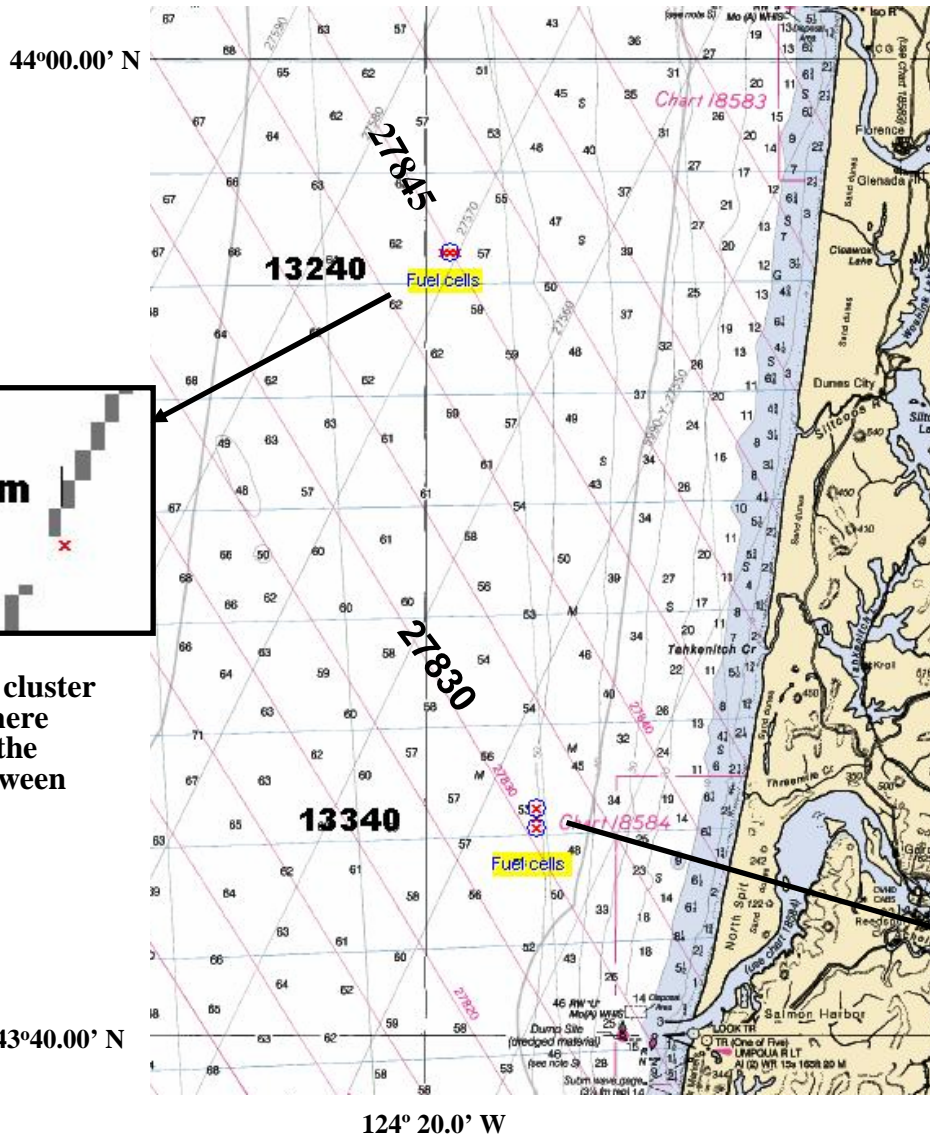
- Each fuel cell protrudes approximately 2 ft x 3 ft above the seafloor and weighs 100 lbs.
- They will be in place until July 1, 2005



Contact: Clare Reimers, Hatfield Marine Science Center, Newport, 541-867-0220

**\$100 reward if retrieved accidentally and returned**

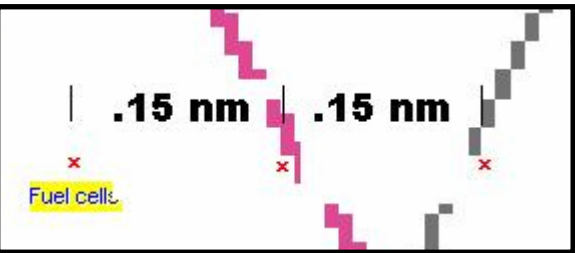
# Expanded View of Location of Fuel Cells in Two Clusters Located on Seafloor of Active Fishing Areas



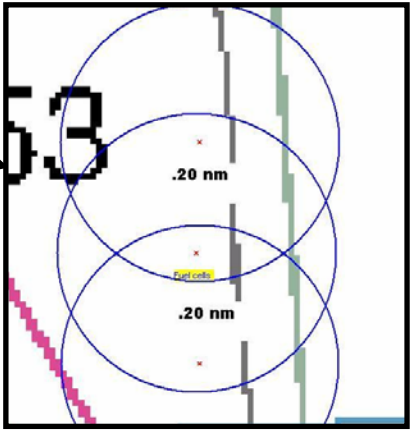
44°00.00' N

43°40.00' N

124° 20.0' W



Close up view of northern cluster of fuel cells. NOTE, there are three fuel cells in the cluster and .15nm between adjacent fuel cells.



Close up view of the southern cluster of fuel cells. NOTE, there are three fuel cells in the cluster and .20 nm between adjacent fuel cells.